

**WOMEN'S HEALTH CARE ASSOCIATES  
PAYER MIX BY PLM RVUS  
PERIOD ENDING 123105 WITH 2005 WEIGHTS**

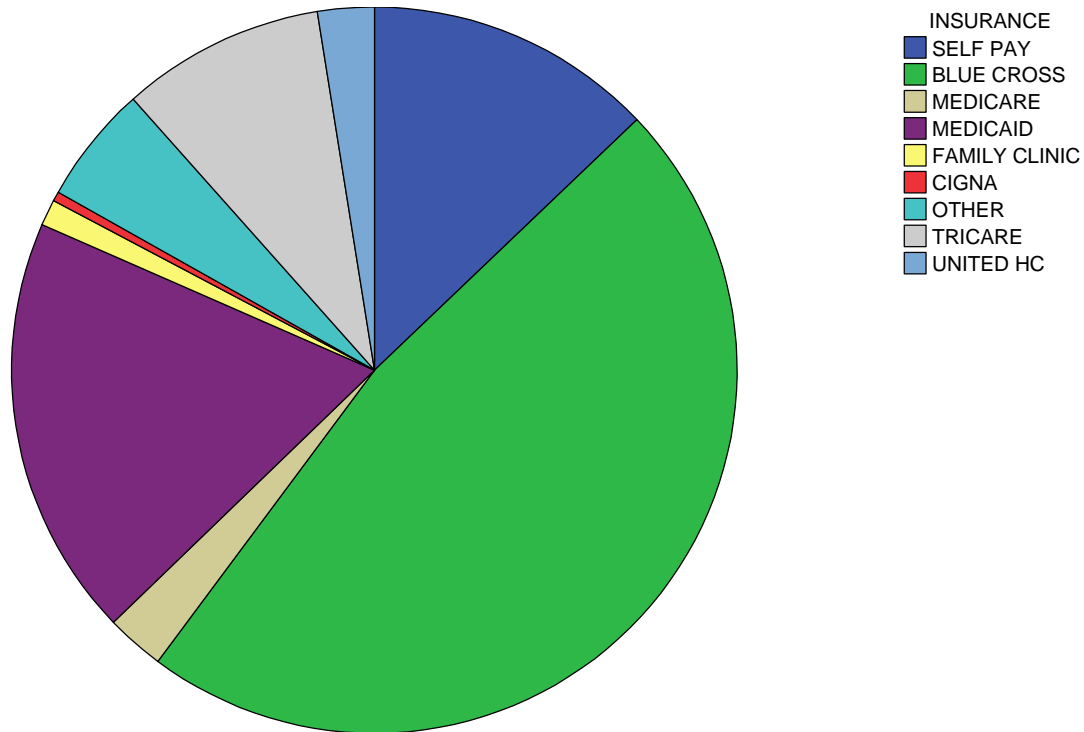
		PLM RVUS
INSURANCE	BLUE CROSS	113,532
		47.3%
	MEDICAID	45,083
		18.8%
	SELF PAY	30,923
		12.9%
	TRICARE	21,768
		9.1%
	OTHER	12,626
		5.3%
	MEDICARE	6,227
		2.6%
	UNITED HC	6,040
		2.5%
	FAMILY CLINIC	2,791
		1.2%
	CIGNA	1,011
		.4%
	Total	240,001
		100.0%

9/12/2006

# WOMEN'S HEALTH CARE ASSOCIATES

PERIOD ENDING 123105 WITH 2005 WEIGHTS

## PAYER MIX



Total Adjusted Collections per PLM RVU is 41.31

Costs are calculated from Component Adjusted Total Operating Costs per Component PLM RVU

The component-derived expense per PLM Work RVU is 40.22

The component-derived expense per PLM Practice RVU is 36.48

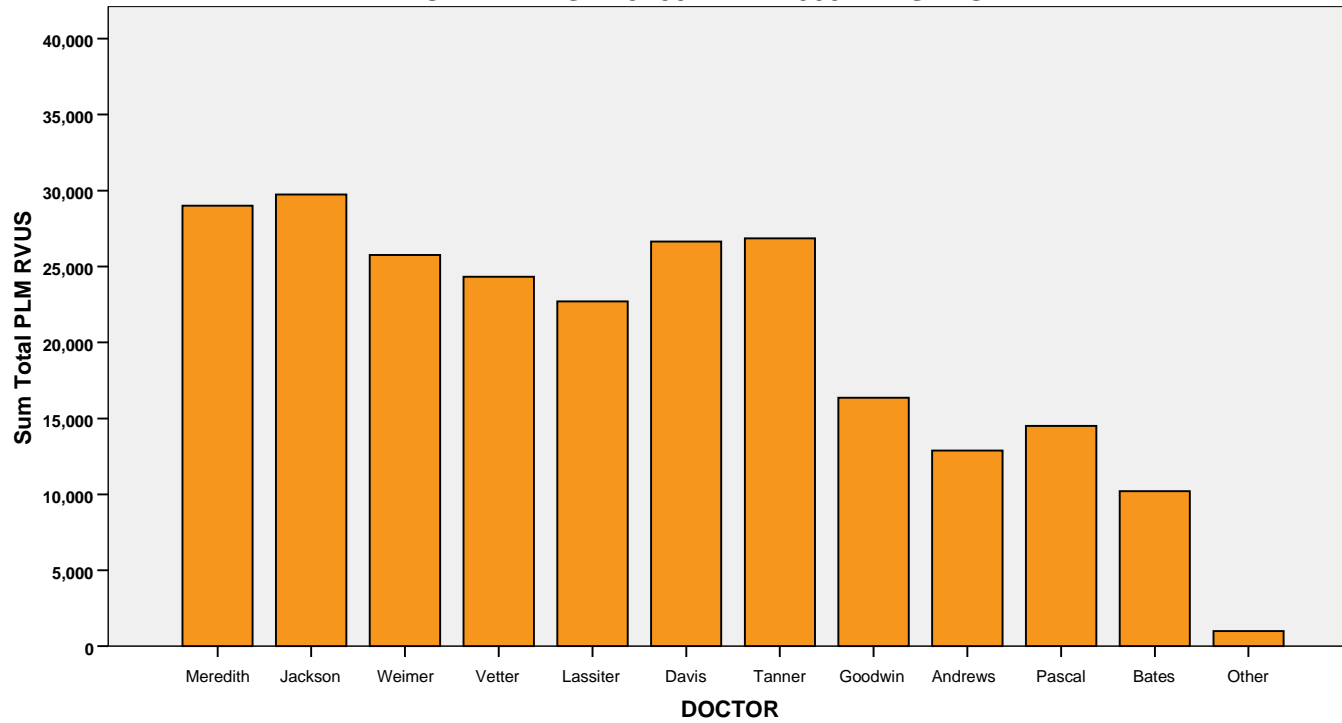
The component-derived expense per PLM Malpractice RVU is 39.27

**WOMEN'S HEALTH CARE ASSOCIATES  
TOTAL PRODUCTION BY PROVIDER  
PERIOD ENDING 123105 WITH 2005 WEIGHTS**

		MD Work	Practice	Malpractice	Total PLM RVUS
DOCTOR	Meredith	14,580	12,022	2,401	29,003
		12.0%	12.3%	11.7%	12.1%
	Jackson	14,999	12,229	2,512	29,740
		12.3%	12.5%	12.2%	12.4%
	Weimer	13,087	10,483	2,189	25,759
		10.8%	10.7%	10.7%	10.7%
	Vetter	12,517	9,868	1,946	24,332
		10.3%	10.1%	9.5%	10.1%
	Lassiter	11,405	9,464	1,834	22,703
		9.4%	9.7%	8.9%	9.5%
	Davis	13,517	10,693	2,434	26,643
		11.1%	10.9%	11.9%	11.1%
	Tanner	14,118	10,478	2,269	26,865
		11.6%	10.7%	11.1%	11.2%
	Goodwin	8,437	6,570	1,359	16,366
		6.9%	6.7%	6.6%	6.8%
	Andrews	6,148	5,865	865	12,879
		5.1%	6.0%	4.2%	5.4%
	Pascal	7,009	5,993	1,505	14,507
		5.8%	6.1%	7.3%	6.0%
	Bates	5,060	4,053	1,091	10,204
		4.2%	4.1%	5.3%	4.3%
	Other	611	264	126	1,000
		.5%	.3%	.6%	.4%
Total		121,488	97,982	20,531	240,001
		100.0%	100.0%	100.0%	100.0%

# WOMEN'S HEALTH CARE ASSOCIATES

PERIOD ENDING 123105 WITH 2005 WEIGHTS



**WOMEN'S HEALTH CARE ASSOCIATES**  
**New Patient Mix for Selected Services**

		CPTCODE										Total Visits	
		99201		99202		99203		99204		99205		Sum	Row Sum %
		Sum	%	Sum	%	Sum	%	Sum	%	Sum	%	Sum	%
DOCTOR	Meredith	1	.5%	8	4.3%	108	58.4%	68	36.8%	.	.0%	185	100.0%
	Jackson	3	1.4%	20	9.7%	173	83.6%	10	4.8%	1	.5%	207	100.0%
	Weimer	10	3.0%	75	22.5%	150	45.0%	98	29.4%	.	.0%	333	100.0%
	Vetter	.	.0%	6	2.8%	41	18.9%	120	55.3%	50	23.0%	217	100.0%
	Lassiter	1	.3%	62	17.4%	290	81.5%	3	.8%	.	.0%	356	100.0%
	Davis	4	1.9%	68	31.5%	93	43.1%	51	23.6%	.	.0%	216	100.0%
	Tanner	5	2.1%	51	21.2%	76	31.5%	99	41.1%	10	4.1%	241	100.0%
	Goodwin	2	.6%	2	.6%	44	14.3%	108	35.1%	152	49.4%	308	100.0%
	Andrews	8	1.3%	317	52.3%	274	45.2%	7	1.2%	.	.0%	606	100.0%
	Pascal	1	4.0%	2	8.0%	21	84.0%	1	4.0%	.	.0%	25	100.0%
	Bates	.	.0%	.	.0%	22	95.7%	.	.0%	1	4.3%	23	100.0%
	Other	.	.0%	.	.0%	2	100.0%	.	.0%	.	.0%	2	100.0%
	Total Visits	35	1.3%	611	22.5%	1,294	47.6%	565	20.8%	214	7.9%	2,719	100.0%

9/12/2006

**WOMEN'S HEALTH CARE ASSOCIATES  
DELIVERIES  
PERIOD ENDING 123105**

VOLUME

		DOCTOR												
CPTCODE		Meredith	Jackson	Weimer	Vetter	Lassiter	Davis	Tanner	Goodwin	Andrews	Pascal	Bates	Other	Total
59400		163	164	149	108	114	177	104	81	64	194	153	1	1,472
59409		1	.	.	3	1	10	.	1	.	23	4	1	44
59410		1	3	3	8	2	10	4	3	1	6	1	19	61
59510		78	83	77	65	65	89	103	58	17	1	13	.	649
59514		4	2	5	6	3	10	4	6	.	.	.	10	50
59515		1	.	.	.	.	.	.	.	.	.	.	.	1
59610		.	6	3	2	1	.	.	1	.	4	.	.	17
59612		.	.	.	.	.	.	.	.	.	1	.	.	1
TOTAL														
	DELIVERIES	248	258	237	192	186	296	215	150	82	229	171	31	2,295

9/12/2006

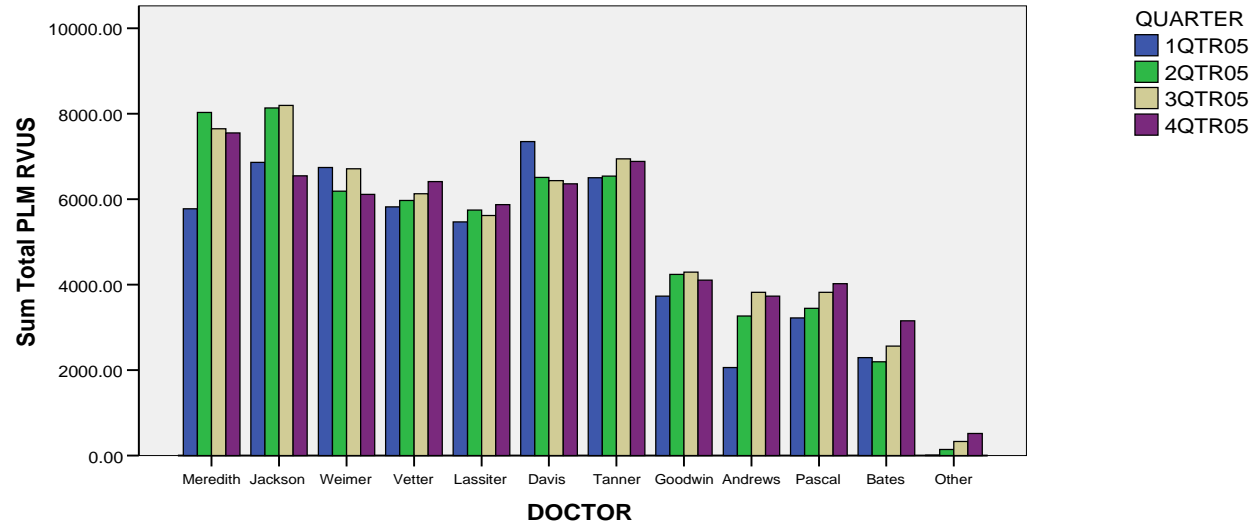
**WOMEN'S HEALTH CARE ASSOCIATES  
SERVICE MIX BY PROVIDER  
PERIOD ENDING 123105 WITH 2005 WEIGHTS**

**TOTAL PLM RVUS**

		TYPE			TOTAL PLM RVUS
		GYN	MEDICAL	OB	
DOCTOR	Meredith	8,496	3,999	16,266	28,761
		29.5%	13.9%	56.6%	100.0%
	Jackson	9,789	2,513	17,215	29,517
		33.2%	8.5%	58.3%	100.0%
	Weimer	9,507	1,606	14,507	25,620
		37.1%	6.3%	56.6%	100.0%
	Vetter	10,571	1,386	12,204	24,161
		43.8%	5.7%	50.5%	100.0%
	Lassiter	7,805	2,451	12,403	22,660
		34.4%	10.8%	54.7%	100.0%
	Davis	6,230	2,232	17,995	26,457
		23.5%	8.4%	68.0%	100.0%
	Tanner	9,123	2,741	14,706	26,571
		34.3%	10.3%	55.3%	100.0%
	Goodwin	6,096	810	9,355	16,262
		37.5%	5.0%	57.5%	100.0%
	Andrews	5,100	1,711	5,999	12,811
		39.8%	13.4%	46.8%	100.0%
	Pascal	948	172	13,388	14,507
		6.5%	1.2%	92.3%	100.0%
	Bates	585	162	9,456	10,204
		5.7%	1.6%	92.7%	100.0%
	Other	20	24	820	864
		2.3%	2.7%	94.9%	100.0%
	Total	74,272	19,808	144,315	238,395
		31.2%	8.3%	60.5%	100.0%

# WOMEN'S HEALTH CARE ASSOCIATES

## PERIOD ENDING 123105 WITH 2005 WEIGHTS





**WOMEN'S HEALTH CARE ASSOCIATES  
PERIOD ENDING 123105 WITH 2005 WEIGHTS**

		QUARTER				
		1QTR05	2QTR05	3QTR05	4QTR05	Total
		Total PLM RVUS	Total PLM RVUS	Total PLM RVUS	Total PLM RVUS	Total PLM RVUS
DOCTOR	Meredith	5,775	8,026	7,648	7,554	29,003
		10.3%	13.3%	12.2%	12.3%	12.1%
	Jackson	6,865	8,135	8,195	6,545	29,740
		12.3%	13.5%	13.1%	10.7%	12.4%
	Weimer	6,744	6,190	6,711	6,113	25,759
		12.1%	10.2%	10.7%	10.0%	10.7%
	Vetter	5,820	5,972	6,126	6,413	24,332
		10.4%	9.9%	9.8%	10.5%	10.1%
	Lassiter	5,470	5,743	5,616	5,874	22,703
		9.8%	9.5%	9.0%	9.6%	9.5%
	Davis	7,347	6,508	6,430	6,358	26,643
		13.2%	10.8%	10.3%	10.4%	11.1%
	Tanner	6,504	6,536	6,945	6,880	26,865
		11.6%	10.8%	11.1%	11.2%	11.2%
	Goodwin	3,731	4,238	4,295	4,102	16,366
		6.7%	7.0%	6.9%	6.7%	6.8%
	Andrews	2,064	3,267	3,819	3,728	12,879
		3.7%	5.4%	6.1%	6.1%	5.4%
	Pascal	3,220	3,444	3,818	4,025	14,507
		5.8%	5.7%	6.1%	6.6%	6.0%
	Bates	2,292	2,194	2,565	3,154	10,204
		4.1%	3.6%	4.1%	5.1%	4.3%
	Other	6	141	330	523	1,000
		.0%	.2%	.5%	.9%	.4%
	Total	55,839	60,394	62,498	61,270	240,001
		100.0%	100.0%	100.0%	100.0%	100.0%